

SOLID POLYCARBONATE
STANDING SEAM
ARCHITECTURAL SYSTEM

Introduction

AMPGLAZE® is an architectonic glazing system with elegant design and appearance. It offers high versatility, low maintenance and a sustainable design for various architectonic challenges. AMPGLAZE® incorporates standing-seam profiling and glazing that enable wide spans and high load resistance. It can be specified in various lengths to match various structures, including flat and curved designs.

Main Benefits

- Glass-like clear appearance
- Standing seam leak-proof performance
- Free thermal expansion
- Caulking and silicone free
- Withstanding high loads
- Easy, fast and safe installation
- Minimal maintenance

Applications

- Architectural structures
- Commercial and Retail
- Sport venues roofing
- Covered walkways
- Open markets
- Service stations
- Entrances
- Pool covers

Typical Physical Properties

Properties	Method*	Conditions	Units	Value
Density	D-792		g/cm ³	1.2
Heat deflection temperature (HDT)	D-648	Load:1.82 MP	°C	135
Vicat softening temperature	D-1525	Load:1kg °C		150
Service Temperature-Short term			°C	-50 to+120
Service Temperature-Long term			°C	-50 to+100
Tensile strength at yield	D-638	10mm/min	MPa	62
Flexural strength	D-790	1 mm/min	MPa	93
Flexural modulus	D-790	1.3 mm/min	MPa	2,600
Notched impact strength Izod	D-256	23°C	J/m	800
Impact falling weight	ISO 6603/1d	3 mm sheet	J	158
Coefficient of linear thermal expansion	D-696		cm/cm°C	6.5x10 ⁻⁵
Thermal conductivity	C-177		W/m*K	0.21
Specific heat capacity	C-351		kJ/kg*K	1.3
Fire Retardant Properties	D-635			CC-1

Remark :

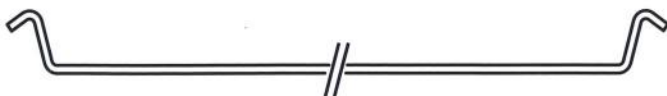
*Properties in the table relate to the polycarbonate glazing panels in the AMPGLAZE® system.

*ASTM method except where noted otherwise



Panel Dimension

Panel Section



AMPGLAZE® 3/600 & 4/600

Panel Data	3/600**	4/600
Width	584 mm	585 mm
Height	20 mm	21 mm
Weight	2.20 kg/m	2.94 kg/m
System Weight	6.14 kg/m	7.40 kg/m

Remark : **Stock available in Thailand

Installation

Purlin and Rafter Design

Recommended Spans-for wind load of 3/600** & 4/600

Single Span			
Span type	Singel-Span		
Wind Load	75 kg/m ²	100 kg/m ²	125 kg/m ²
Span (mm)	900	820	760

Multi-Span						
Span type	Mid-Span			End-Span		
	Wind Load	75 kg/m ²	100 kg/m ²	125 kg/m ²	75 kg/m ²	100 kg/m ²
Span (mm)	1,540*	1,400	1,300	1,210*	1,100	1,020

Remark : *Recommended spanning.

Cold-Curving Radius

Type	Minimum Arching Radius (mm)
3/600**	4,000
4/600	4,000

**Stock available in Thailand

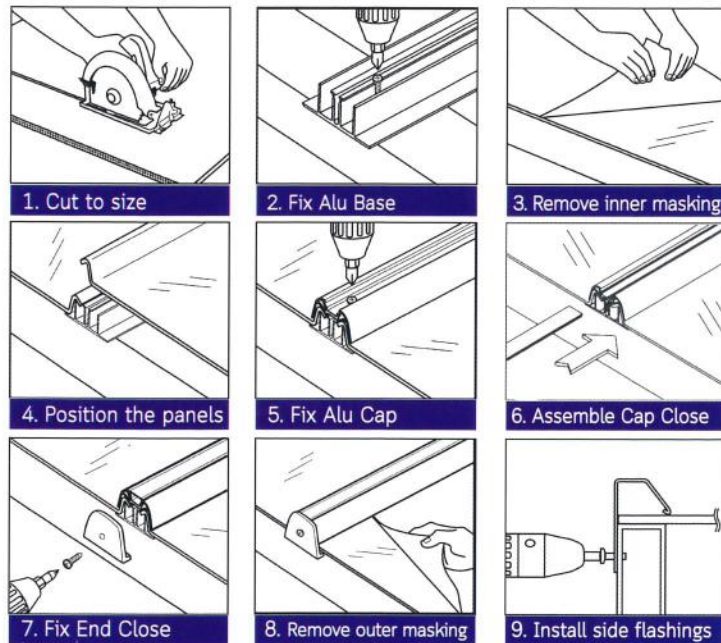
Other size, color required please contact Ampelite World Co., Ltd.

Thermal Insulation

Thickness	AMPGLAZE® U-Value [Watts/m ² °k]	Glass U-Value [Watts/m ² °k]
3**	5.43	5.79
4	5.29	5.76

Installation

Appropriate slope Min 5 degrees



System Components

Component List	Photo
AMPGLAZE® - Panel	
Alu Base - Anodized Aluminium	
Alu Cap - Anodized Aluminium	
Cap Close - Anodized Aluminium	
End Close - Anodized Aluminium	
Locking Screw - NP 12-14x19 PAN HEAD @ 25 cm.	
Fixing Screw - SDP 10-24x22 WAFER @ Every Purlin	

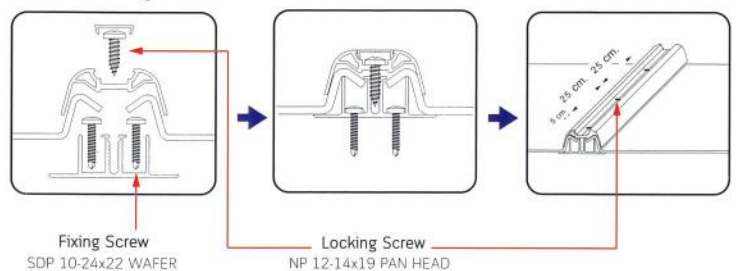
Remark :

- When installing, locate the center line of aluminium components at 600 mm.
- In case a structure is the rafter system, please fix the fixing screw on every 800 mm., while purlin system please fix the fixing screw on every purlin.
- Fix the locking screw on every 25 cm.
- In strong wind area, it must be fixed with FX SDP 12-14X50 HEX C3 W through close to purlin on last purlin at end of sheet.

Color and Panel Section

Color	LT	SC
Green**	80%	0.67
Solar Control**	20%	0.36

Assembly Illustration



Project References



© Copyright, 04/2021 The data in this publication supersedes previous issues.



Quality product by
Ampelite World Co., Ltd. www.ampelite.co.th



AMPGLAZE Warranty

Type of Warranty	Warranty
Water Non-leaking	20 YEAR

Remark : Please see full details in original warranty